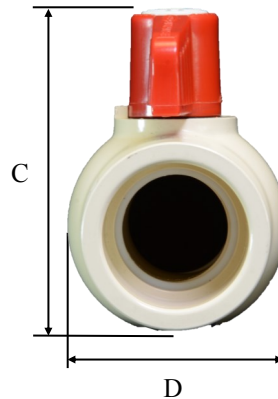
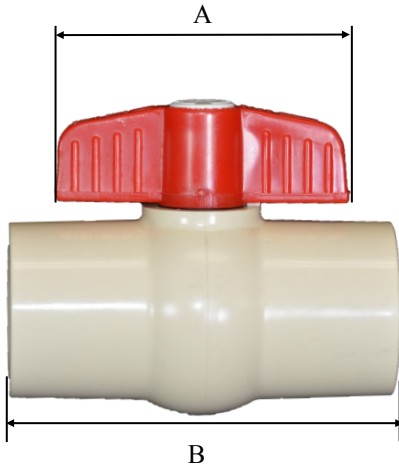
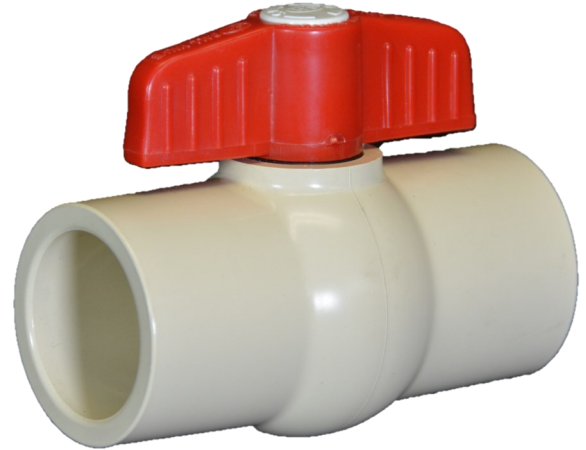


## CPVC-CTS NSF NON-SERVICEABLE BALL

RATED @100 PSI @ 180°F (150 PSI @ 72°F) STATIC PRSSURE  
 VALVE BODY, BALL, HANDLE & STEM ARE CPVC  
 TEFLON BALL SEAT  
 EPDM O-RING  
 ABS HANDLE  
 NSF LISTED  
 CTS—COPPER TUBE SIZE



PART NUMBER	A (INCHES)	B (INCHES)	C (INCHES)	D (INCHES)	WEIGHT (LBS)	CONNECTION
C1310-05	2.43	2.73	2.19	1.32	0.10	1/2" CTS
C1310-07	2.81	3.14	2.7	1.61	0.20	3/4" CTS
C1310-10	3.0	3.52	3.06	1.80	0.25	1" CTS
C1310-12	3.53	4.03	3.41	2.17	0.40	1 1/4" CTS
C1310-15	3.53	4.62	3.83	2.55	0.60	1 1/2" CTS
C1310-20	4.38	5.39	4.40	3.0	0.90	2" CTS

NOTE: ALL VALVES HAVE SLIP / SOLVENT WELD ENDS.