

SNAP-ALL[®] *Transition Bushings*

... the fastest way to DWV transitions

Snap-All Increaser/Reducer Transition bushings from Clamp-All[®] are the easiest and fastest way to make transitions between pipes of different diameters and/or materials. From 3/4" copper to 10" hubless cast iron, clay, plastic or steel, Snap-All bushings take the hassle out of any DWV transition.

- Snap-All transition bushings bring the advantages of a high strength shielded coupling to any DWV transition:
 - The outer grooves of the bushing nest into the HI-TORQ coupling gaskets or to other Snap-All bushings to provide an interlocking water tight, gas tight seal.
 - Bushings are one piece molded neoprene, the same high quality, material used for HI-TORQ coupling gaskets.
- Snap-All's unique design allows it to be used with either the Clamp-All HI-TORQ 80 or HI-TORQ 125 couplings.
- Snap-All bushings are convenient. Use them on one side or both sides of the coupling, for permanent or emergency installations, even with a blind plug as a cap.
- Snap-All bushings are designed for use where pipes of different materials or sizes must be connected in DWV applications. From 10" hubless cast iron, plastic, or steel pipe all the way down to 3/4" copper, every transition is easily made simply by nesting one size bushing into a coupling gasket or another bushing.
- Snap-All bushings are adaptable in most DWV transition combinations. There's no need to order or keep track of special reducing iron fittings. Clamp-All couplings and Snap-All bushings make every transition hassle-free.



Clamp-All

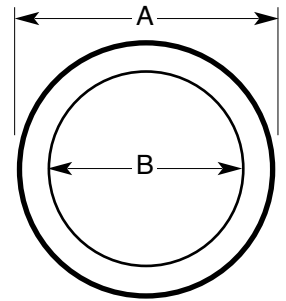
Snap-All Bushings . . . for reliable transition of materials

The Snap-All Increaser/Reducer transition bushings used in conjunction with Clamp-All couplings are the easiest and fastest way to make transitions from DWV pipes of different diameters or materials. They are specifically designed for use where pipes from 3/4" to 10" of different sizes and/or materials must be connected.

Selection is easy. Simply choose the bushing that fits inside the Clamp-All coupling being used. For example to reduce down from a 5" pipe to a 4" pipe, snap a #20054 bushing into a 5" coupling. This simple transition is all that is required to join cast iron, plastic or steel pipe of two different diameters. For smaller pipes, several bushings can be nested together to create the transition that is needed. Bushing #20043 will nest inside the 5x4 bushing and receive 3" pipe. Note that transitions to copper pipe must end with the specific bushing for that size copper. Snap-All bushings part numbers 30022, 30033 and 30044 can be used to join extra heavy cast iron soil pipe to hubless pipe and fittings. Refer to the chart on this page for ordering information.

Engineering & Ordering Information

Snap-All Part Number	Snap-All Bushing Size	A Diameter Fits Inside		B Diameter Fits Outside	
		Clamp-All Coupling	Snap-All Bushing	Pipe Size	Material
31575	1½x¾cu	1½	2x1½	¾	Copper
30151	1½x1cu	1½	2x1½	1	Copper
31512	1½x1¼cu	1½	2x1½	1¼	Copper
31515	1½x1½cu	1½	2x1½	1½	Copper
30215	2x1½cu	2	3x2	1½	Copper
20215	2x1½	2	3x2	1½	Cl, STL, PVC
30022	2x2cu	2	3x2	2	Copper, XHCl
30032	3x2cu	3	4x3	2	Copper
20032	3x2	3	4x3	2	Cl, STL, PVC
30033	3x3cu	3	4x3	3	Copper, XHCl
30043	4x3cu	4	5x4	3	Copper
20043	4x3	4	5x4	3	Cl, STL, PVC
30044	4x4cu	4	5x4	4	Copper, XHCl
20054	5x4	5	6x5	4	Cl, STL, PVC
20065	6x5	6	8x6	5	Cl, STL, PVC
50064	6x4ECC	6	8x6	4	Cl, STL, PVC
20086	8x6	8	10x8	6	Cl, STL, PVC
20875	8x7½cu	8	-	6	Clay
20108	10x8	10	-	8	Cl, STL, PVC
21095	10x8	10	-	8	Clay



Nominal Outside Pipe Diameter						
Pipe Size	Hubless Cast Iron	Steel	Schedule 40-80 PVC	SDR-35 Plastic	Clay	Copper DWV
1¼	-	-	-	-	-	1.375
1½	1.90	1.90	1.90	-	-	1.625
2	2.35	2.38	2.38	-	-	2.125
3	3.35	3.38	3.38	-	-	3.125
4	4.38	4.50	4.50	4.215	5.37	4.125
5	5.30	5.56	5.56	-	6.65	5.125
6	6.30	6.63	6.63	6.28	7.50	6.125
8	8.38	8.63	8.63	8.40	-	-
10	10.56	10.75	10.75	10.50	-	-

Represented by:

Note: All sizes in the charts are in nominal inches

For information, the name of your local representative, for technical support call or fax:

NDS Customer Service

851 N. Harvard Ave., Lindsay, CA 93247
 Phone: 800.726.1994 · 559.562.9888 | Fax: 800.726.1998 · 559.562.4488
 ndspro.com

